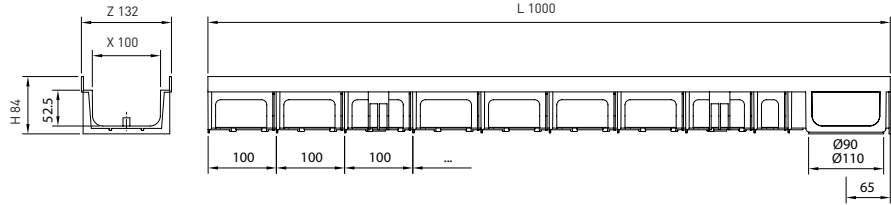
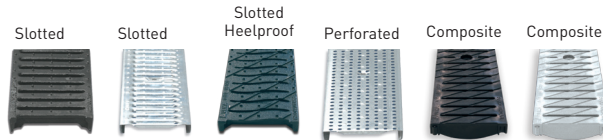


HYDROMINIPLUS



Code	L (mm)	H (mm)	Width (mm)		Ø Outlet (mm)		Hydraul. Section (cm ²)	Pcs (x pallet)
			Z	X	Vert.	Horiz.		
HYDROPLUSH85	1000	84	132	100	90-110	Connection at 90° (1)	51	170

(1) Every channel has two preformed side knockouts for T, L and cross connections.

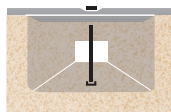


GRATINGS

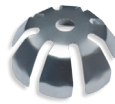
Material	Design	Load	Code	L (mm)	Width (mm)	Units (x 1m)
COMPOSITE	HEELPROOF BLACK SLOTTED	A 15	PNH100KCAM	500	123	2
	HEELPROOF GREY SLOTTED	A 15	PNH100KCAM-GRIS	500	123	2
DUCTILE IRON	SLOTTED	C 250	FNX100KCCM	500	123	2
	HEELPROOF SLOTTED	C250	FNHX100KCCM	500	123	2
GALVANIZED STEEL	SLOTTED	A 15	GN100KCA	1000	123	1
	MESH	B 125	GEX100KCB	1000	123	1
STAINLESS STEEL	SLOTTED	A 15	IN100KCA	1000	123	1
	MESH	B 125	IEX100KCB	1000	123	1
	PERFORATED	A 15	IP100KCA	1000	123	1

LOCKING SYSTEM

SCREW LOCKING SYSTEM. 2 screw per metre.



Closed



END CAPS

Code	Type
TH100H80C	CLOSED

LEAF GUARD

Code
FS90

