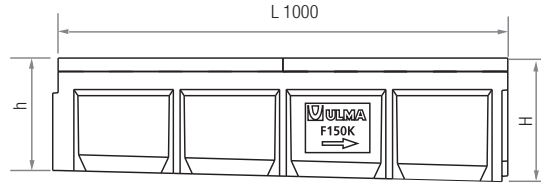
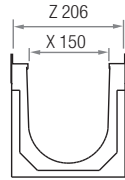
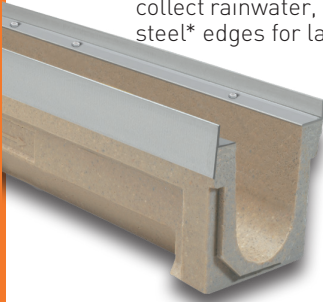


F150K SLOPE 2,5%

LOAD CLASS
UP TO F900
EN-1433 STANDARD

ULMA Linear Drainage Channel type F150K: External width 206 mm; Internal width 150 mm; Available with overall heights between 145 mm and 370 mm. Suitable also with 2,5% presloped, cascaded or mixed slope, to collect rainwater, in 1 metre long units. Safe locking system consists of eight bolts per LM; Integrated galvanized steel* edges for lateral protection.

*Also available with cast iron or stainless steel edges.



Channel	L (mm)	H (mm)		Width (mm)		Ø Outlet* (mm)		Hydraul. Section (cm ²)	Sloped	Pcs. (x pallet)
		h	H	Z	X	Vert.	Hor.			
F150K01M	500	145	145	212	150	-	-	120	-	*
F150K02	1000	145	170	206	150	-	-	155	2.5%	*
F150K03	1000	170	195	206	150	-	-	190	2.5%	*
F150K04	1000	195	220	206	150	-	-	230	2.5%	*
F150K00R	1000	220	220	206	150	160	-	230	-	45
F150K05	1000	220	245	206	150	-	-	265	2.5%	*
F150K06	1000	245	270	206	150	-	-	305	2.5%	*
F150K10R	1000	270	270	206	150	160	-	305	-	36
F150K07	1000	270	295	206	150	-	-	340	2.5%	*
F150K08	1000	295	320	206	150	-	-	380	2.5%	*
F150K20R	1000	320	320	206	150	160	160	380	-	27
F150K09	1000	320	345	206	150	-	-	410	2.5%	*
F150K10	1000	345	370	206	150	-	-	457	2.5%	*
F150K30R	1000	370	370	206	150	160	-	457	-	27

* Check minimum order

* Vert. and horiz. outlets on order.

CONTINUOUS PRESLOPED OF 2,5%

AB150-2 **AB150-2**

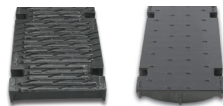
Sump Unit A150B415 Outlet Diam. 315/415 mm Sump Unit A150B415 Outlet Diam. 315/415 mm

FIRST POLYMER CONCRETE CHANNEL WITH PRESLOPED OF 2,5% ON THE MARKET

- High hydraulic capacity.
- Self-cleaning effect.
- Minimum maintenance.

Slotted normal & heelproof

Solid



GRATINGS

Material	Design	Load	Code	L (mm)	Width (mm)	Opening (mm)	Uds. (xLM)
DUCTILE IRON	SLOTTED	D400	FNX150FTDM	500	195	13,75	2
	HEELPROOF SLOTTED	D400	FNHX150FTDM	500	195	8	2
	SLOTTED	E600	FNX150FTEM	500	195	19	2
	SLOTTED	F900	FNX150FTFM	500	195	19	2
	HEELPROOF SLOTTED	F900	FNHX150FTFM	500	195	8	2
	SOLID	F900	FC150FTFM	500	195	-	2