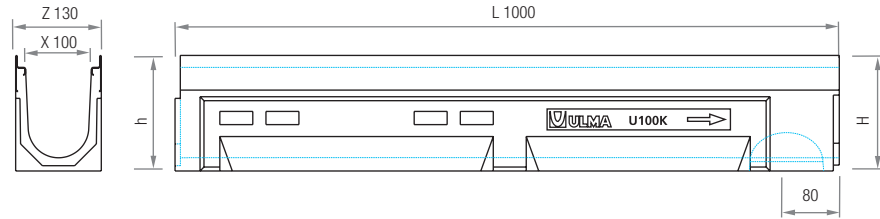
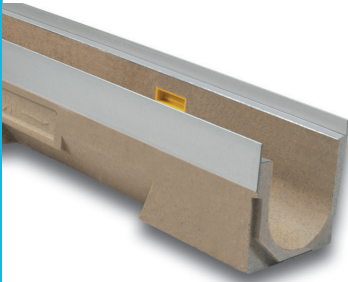


U100K

LOAD CLASS
UP TO C250
EN-1433 STANDARD

ULMA Linear Drainage Channel type U100K: External width 130 mm; Internal width 100 mm; Available with overall heights between 150 mm and 250 mm for 0,5% presloped channels and between 150 and 300 mm for cascaded slope, to collect rainwater in 1 metre long units; Integrated galvanized steel* edges for lateral protection. Locking system consists of CS100 locking bar and screws.

*Also available with stainless steel edge protection.



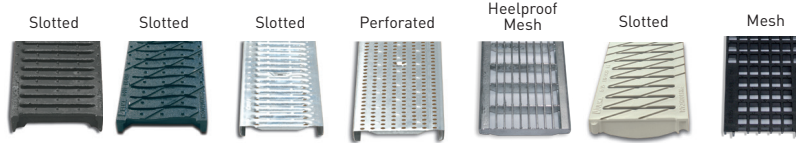
Channel	L (mm)	Height (mm)		Width (mm)		Ø Outlet* (mm)		Hydraul. Section (cm ²)	Pcs. / Pallet
		h	H	Z	X	Vert.	Horiz.		
U100K00R	1000	150	150	130	100	110	-	97	90
U100K01	1000	150	155	130	100	-	-	97	90
U100K02	1000	155	160	130	100	-	-	101	90
U100K03	1000	160	165	130	100	-	-	106	78
U100K04	1000	165	170	130	100	-	-	111	78
U100K05	1000	170	175	130	100	-	-	116	78
U100K05R	1000	175	175	130	100	110	-	120	78
U100K06	1000	175	180	130	100	-	-	120	65
U100K07	1000	180	185	130	100	-	-	125	65
U100K08	1000	185	190	130	100	-	-	130	65
U100K09	1000	190	195	130	100	-	-	135	65
U100K10	1000	195	200	130	100	-	-	140	65
U100K10R	1000	200	200	130	100	110	110	145	65
U100K11	1000	200	205	130	100	-	-	145	65
U100K12	1000	205	210	130	100	-	-	150	65
U100K13	1000	210	215	130	100	-	-	155	65
U100K14	1000	215	220	130	100	-	-	159	65
U100K15	1000	220	225	130	100	-	-	164	65
U100K15R	1000	225	225	130	100	110	110	169	65
U100K16	1000	225	230	130	100	-	-	169	65
U100K17	1000	230	235	130	100	-	-	174	65
U100K18	1000	235	240	130	100	-	-	178	52
U100K19	1000	240	245	130	100	-	-	183	52
U100K20	1000	245	250	130	100	-	-	188	52
U100K20R	1000	250	250	130	100	110	110	193	52
U100K25R	1000	275	275	130	100	110	110	240	52
U100K30R	1000	300	300	130	100	110	110	288	52

*Vert. and horiz. outlets on order.

SLOPE DESIGNS



U100K



GRATINGS

Material	Design	Load	Code	L (mm)	Width (mm)	Opening (mm)	Units (x LM)
DUCTILE IRON	SLOTTED	C250	FNX100KCCM	500	123	14	2
	HEELPROOF SLOTTED	C250	FNHX100KCCM	500	123	5	2
GALVANIZED STEEL	PERFORATED	A15	GP100KCA	1000	123	∅ 6	1
	SLOTTED	A15	GN100KCA	1000	123	9	1
	HEELPROOF MESH	B125	GEHX100KCB	1000	123	30 x 10	1
STAINLESS STEEL	SLOTTED	A15	IN100KCA	1000	123	7	1
	PERFORATED	A15	IP100KCA	1000	123	∅ 6	1
	MESH	B125	IEX100KCB	1000	123	30 x 20	1
COMPOSITE	HEELPROOF SLOTTED	A15	PNH100KCAM-GRIS (1)	500	123	5	2
	MESH	B125	PE100KCBM	500	123	14 X 12,5	2

(1) Available in several colors.

LOCKING SYSTEM

LOCKING BAR.
Two locking bars and two screws per linear metre.

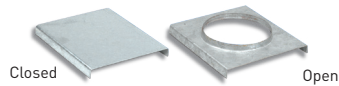


SUMP UNITS AND ACCESSORIES TABLE

Code	L (mm)	H (mm)	Width (mm)	∅ Outlet (mm)		Sump Units	Bucket
				Lateral	Front		
AK100	500	560	130	110/160	90	1	CU100

*Suitable up to height 20R.

Channel	Code	Type	∅ (mm)
U100K00R	T100K00C	CLOSED	-
	T100K00A	OPEN	110
U100K05R	T100K05C	CLOSED	-
	T100K05A	OPEN	110
U100K10R	T100K10C	CLOSED	-
	T100K10A	OPEN	110
U100K15R	T100K15C	CLOSED	-
	T100K15A	OPEN	110
U100K20R	T100K20C	CLOSED	-
	T100K20A	OPEN	110
U100K25R	T100K25C	CLOSED	-
	T100K25A	OPEN	110
U100K30R	T100K30C	CLOSED	-
	T100K30A	OPEN	110



STEP UNITS
Code
CEU100



GALVANIZED STEEL BUCKET
Code
CU100

