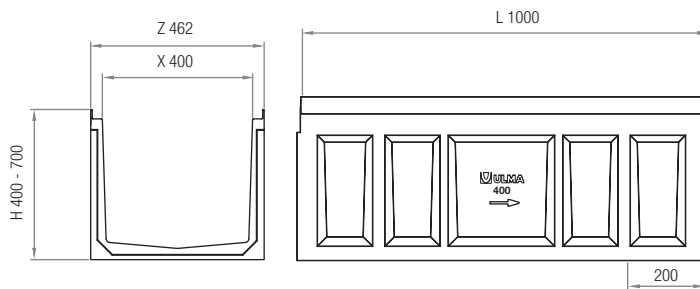
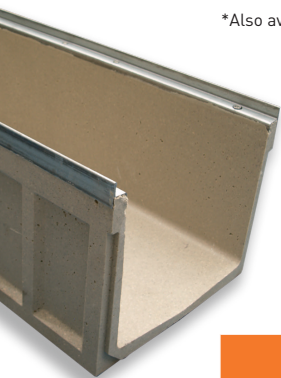


F400K

LOAD CLASS
UP TO F900
EN-1433 STANDARD

ULMA Linear Drainage Channel type F400K: External width 462 mm; Internal width 400 mm; Available with overall heights of 400 mm, to collect rainwater in 1 metre long units. Safe locking system consists of eight bolts per LM; Integrated galvanized steel* edges for lateral protection.

*Also available with cast iron edges.



Channel	L (mm)	H (mm)	Width (mm)		Ø Outlet* (mm)		Hydraul. Section (cm ²)	Pcs. (x pallet)
			Z	X	Vert.	Hor.		
F400K00R	1000	400	462	400	315	-	1312	9
F400K40R	1000	700	494	400	315	-	2490	4

*Vert. outlets on order.

Slotted

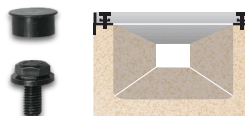


GRATING

Material	Design	Load	Code	L (mm)	Width (mm)	Opening (mm)	Units (x LM)
DUCTILE IRON	SLOTTED	D400	FNX400FTDM	500	451	18,5	2
	SLOTTED	F900	FNX400FTFM	500	451	18,5	2

LOCKING SYSTEM

8 BOLT LOCKING SYSTEM. 8 screws with protection cap, per linear metre.



SUMP UNITS AND ACCESSORIES TABLE

AF400

Code	L (mm)	H (mm)	Width (mm)	Ø Lateral Outlet (mm)	Ø Frontal Outlet (mm)	Sump Units
AF400*	500	585	462	315	-	1

*Available only for 400 mm height.

Channel	END CAPS		Type	Ø (mm)
	Code	Type		
F400K00R	T400K00C	CLOSED	CLOSED	-
	T400K00A	OPEN	OPEN	315
F400K40R	T400K40C	CLOSED	CLOSED	-
	T400K40A	OPEN	OPEN	315

BUCKET

Code

C400

