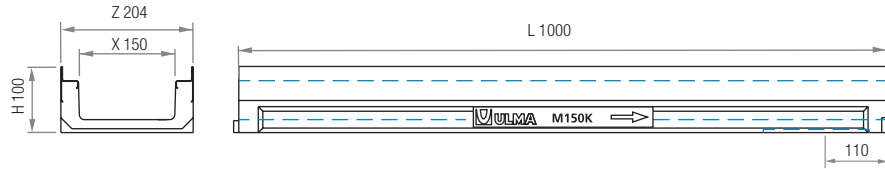
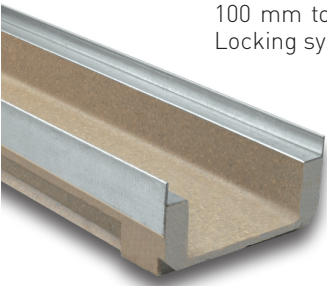


M150K

LOAD CLASS
UP TO C250
EN-1433 STANDARD

ULMA Linear Drainage Channel type M150K: External width 204 mm; Internal width 150 mm and overall height 100 mm to collect rainwater in 1 metre long units. Integrated galvanized steel* edges for lateral protection. Locking system consists of 2 screws per metre.

*Also available with stainless steel edge protection.



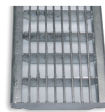
Channel	L (mm)	H (mm)	Width (mm)		Ø Outlet* (mm)		Hydraul. Section (cm ²)	Pcs. / Pallet
			Z	X	Vert.	Hor.		
M150K	1000	100	204	150	160	-	89	60

*Vert. outlets on order.

Slotted

Perforated

Heelproof Mesh

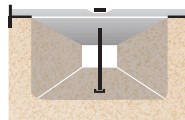


GRATINGS

Material	Design	Load	Code	L (mm)	Width (mm)	Opening (mm)	Units (x LM)
DUCTILE IRON	SLOTTED	C250	FNX150KCCM	500	195	14	2
GALVANIZED STEEL	PERFORATED	A15	GP150KCA	1000	195	Ø 5	1
	HEELPROOF MESH	B125	GEHX150KCB	1000	195	30 x 10	1
STAINLESS STEEL	PERFORATED	A15	IP150KCA	1000	195	Ø 5	1
	MESH	B125	IEX150KCB	1000	195	30 x 20	1

LOCKING SYSTEM

SCREW LOCKING SYSTEM. 2 screws per metre.



END CAPS	
Code	Type
T150MKC	CLOSED

