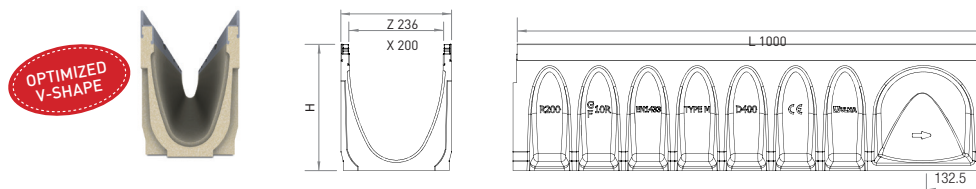


MULTIV+200

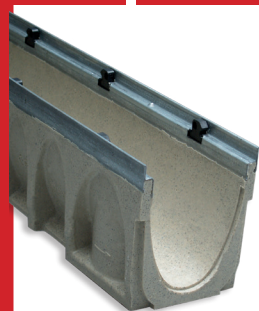
LOAD CLASS
UP TO D400 *
EN-1433 STANDARD

ULMA Linear Drainage Channel, type **MULTIV+®** R200G, External width 236 mm, Internal width 200 mm, with overall heights between 80 and 370 mm; suitable for cascade-type slopes to collect rainwater; sections 1 LM in length; optimized V-shape with self-cleaning effect; especially designed for channel runs with no longitudinal slope; galvanized steel edges for lateral protection; Either **Rapidlock®** boltless system or screw-fastened. 8 locking points per linear metre.



Available with ductile iron and stainless steel edge rails (Code: R200GX).

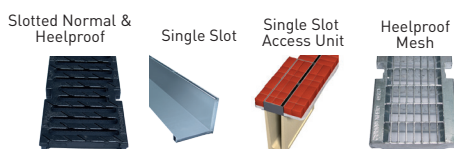
CHANNELS



0,5 m. Channels

Channel Code		L (mm)	H (mm)		Width (mm)		Ø Outlet* (mm)		Hydraul. Section (cm ²)	Units (x pallet)
Rapidlock	Bolted system		Initial	Final	Z	X	Vert.	Hor.		
R200GH8**	R200FH8**	1000	80	80	236	200	160	-	79	42
R200GH12**	R200FH12**	1000	120	120	236	200	160	-	159	42
R200G00R	R200F00R	1000	170	170	236	200	200	-	204	35
R200G00R	R200F00R	1000	220	220	236	200	200	-	284	28
R200G01	R200F01	1000	220	225	236	200	160	-	294,6	28
R200G02	R200F02	1000	225	230	236	200	160	-	302,7	28
R200G03	R200F03	1000	230	235	236	200	160	-	310,9	28
R200G04	R200F04	1000	235	240	236	200	160	-	319	28
R200G05	R200F05	1000	240	245	236	200	160	-	327,2	28
R200G06	R200F06	1000	245	250	236	200	160	-	335,3	21
R200G07	R200F07	1000	250	255	236	200	160	-	343,5	21
R200G08	R200F08	1000	255	260	236	200	160	-	351,6	21
R200G09	R200F09	1000	260	265	236	200	160	-	359,8	21
R200G10	R200F10	1000	265	270	236	200	160	-	368	21
R200G10R	R200F10R	1000	270	270	236	200	200	-	368	21
R200G11	R200F11	1000	270	275	236	200	160	-	388,4	21
R200G12	R200F12	1000	275	280	236	200	160	-	396,1	21
R200G13	R200F13	1000	280	285	236	200	160	-	403,8	21
R200G14	R200F14	1000	285	290	236	200	160	-	411,6	21
R200G15	R200F15	1000	290	295	236	200	160	-	419,3	21
R200G16	R200F16	1000	295	300	236	200	160	-	427	21
R200G17	R200F17	1000	300	305	236	200	160	-	434,8	21
R200G18	R200F18	1000	305	310	236	200	160	-	442,5	21
R200G19	R200F19	1000	310	315	236	200	160	-	450,2	21
R200G20	R200F20	1000	315	320	236	200	160	-	458	21
R200G20R	R200F20R	1000	320	320	236	200	200	-	458	21
R200G30R	R200F30R	1000	370	370	236	200	200	-	542	21
0,5 M CHANNELS										
R200G00RM	R200F00RM	500	220	220	236	200	160	125	284	-
R200G10RM	R200F10RM	500	270	270	236	200	160	160	368	-

*Vert. outlets on order.
**U shaped section.



GRATINGS

Material	Design	Load	Code	L (mm)	Width (mm)	Opening (mm)	Units (x LM)
DUCTILE IRON	HEELPROOF SLOTTED	C250	FNHX200RGCM	500	227	8	2
	SLOTTED	D400	FNX200RGDM	500	227	14	2
	HEELPROOF SLOTTED	D400	FNHX200RGDM	500	227	8	2
GALVANIZED STEEL	SINGLE SLOT (1)	D400	GRL200ROD	1000	231	9,8 / H105	1
	ACCESS UNIT (1)	D400	GRL200RODMA	500	228	9,8 / H105	2
	SINGLE SLOT (1)	D400	GRL200RODH150	1000	231	9,8 / H150	1
	ACCESS UNIT (1)	D400	GRL200RODMAH150	500	228	9,8 / H150	2
	HEELPROOF MESH	C250	GEHX200RGC	1000	227	30 x 10	1

(1) Available Range in Stainless Steel.

LOCKING SYSTEM

FAST, BOLTLESS SAFETY
LOCKING 8 fastening points
per linear meter.

rapidlock®

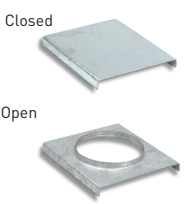
BOLTED, 8 bolts per
LM

SUMP UNITS AND ACCESSORIES TABLE

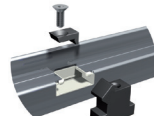
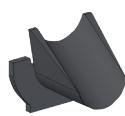
AR200G	Code		L (mm)	H (mm)	Width (mm)	Ø Lateral Outlet (mm)	Ø Frontal Outlet (mm)	Sump Units
	Rapidlock	Bolted system						
	AR200G	AR200F	500	550	236	160/200	110	1

END CAPS

Channel		Material	Code	Type	Accessory	Ø (mm)
Rapidlock	Bolted system					
R200GH8*	R200FH8**	Galvanized steel	TR200H8	CLOSED	-	-
		Polymer concrete	THPR200GH8C	CLOSED	-	-
R200GH12**	R200FH12**	Galvanized steel	TR200H12	CLOSED	-	-
		Polymer concrete	THPR200GH12C	CLOSED	-	-
R200G000R	R200F000R	Galvanized steel	TR200000C	CLOSED	-	-
		Polymer concrete	THPR200G000C	CLOSED	-	-
		Galvanized steel	TR200000A	OPEN	-	110
		Polymer concrete	THPR200G000AJ	OPEN	Joint	110
R200G000R	R200F000R	Polymer concrete	THPR200G000AT	OPEN	Pipe	110
		Galvanized steel	TR200000C	CLOSED	-	-
		Polymer concrete	THPR200G000C	CLOSED	-	-
		Galvanized steel	TR200000A	OPEN	-	160
R200G000R	R200F000R	Polymer concrete	THPR200G000AJ	OPEN	Joint	160
		Polymer concrete	THPR200G000AT	OPEN	Pipe	160
		Galvanized steel	TR20010C	CLOSED	-	-
		Polymer concrete	THPR200G10C	CLOSED	-	-
R200G10R	R200F10R	Galvanized steel	TR20010A	OPEN	-	110
		Polymer concrete	THPR200G10AJ	OPEN	Joint	160
		Polymer concrete	THPR200G10AT	OPEN	Pipe	160
		Galvanized steel	TR20020C	CLOSED	-	-
R200G20R	R200F20R	Polymer concrete	THPR200G20C	CLOSED	-	-
		Galvanized steel	TR20020A	OPEN	-	110
		Polymer concrete	THPR200G20AJ	OPEN	Joint	160
		Polymer concrete	THPR200G20AT	OPEN	Pipe	160
R200G30R	R200F30R	Galvanized steel	TR20030C	CLOSED	-	-
		Polymer concrete	THPR200G30C	CLOSED	-	-
		Galvanized steel	TR20030A	OPEN	-	110
		Polymer concrete	THPR200G30AJ	OPEN	Joint	160
		Polymer concrete	THPR200G30AT	OPEN	Pipe	160



BUCKET	STEP UNITS	SECURITY LOCK		CONNECTORS	
Code	Code	Code	Units x channel	Channel	Code
CR200	CER200	BLOQPRG18020	8	R200G00R	TCR200G00FFA
				R200G10R	TCR200G10FFA
				R200G20R	TCR200G20FFA
				R200G30R	TCR200G30FFA



SLOPE DESIGNS

