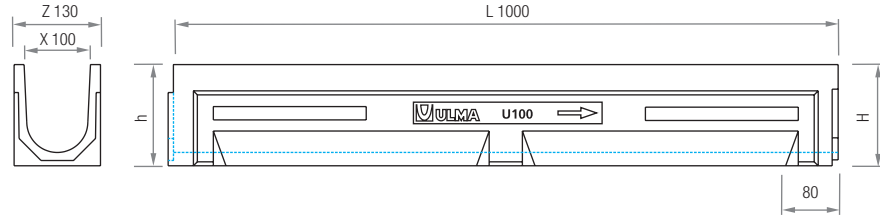
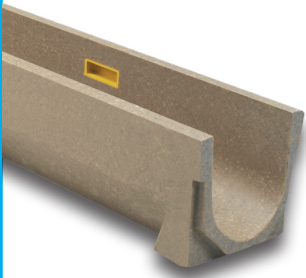


# U100

LOAD CLASS  
**UP TO C250**  
EN-1433 STANDARD

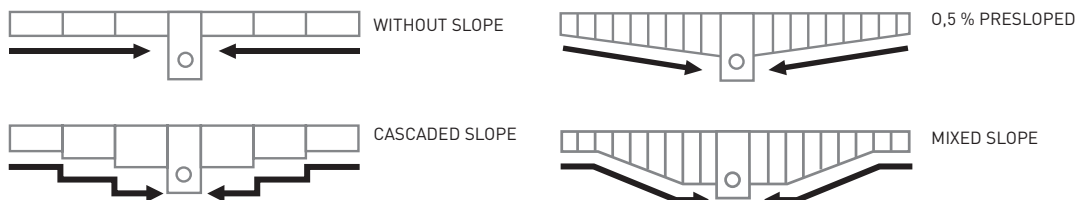
ULMA Linear Drainage Channel type U100: External width 130 mm; Internal width 100 mm; Available with overall heights between 130 and 230 mm for 0,5% presloped channels and between 130 and 280 mm for cascaded slope, to collect rainwater in 1 metre long units. Locking system consists of locking bar CS100 and screws.



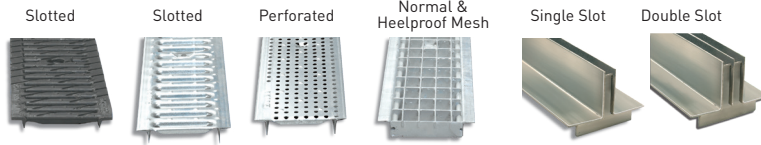
Channel	L (mm)	Height (mm)		Width (mm)		Ø Outlet*(mm)		Hydraul. Section (cm <sup>2</sup> )	Pcs. / Pallet
		h	H	Z	X	Vert.	Horiz.		
U100.00R	1000	130	130	130	100	110	-	97	90
U100.01	1000	130	135	130	100	-	-	97	90
U100.02	1000	135	140	130	100	-	-	101	90
U100.03	1000	140	145	130	100	-	-	106	78
U100.04	1000	145	150	130	100	-	-	111	78
U100.05	1000	150	155	130	100	-	-	116	78
U100.05R	1000	155	155	130	100	110	-	120	78
U100.06	1000	155	160	130	100	-	-	120	65
U100.07	1000	160	165	130	100	-	-	125	65
U100.08	1000	165	170	130	100	-	-	130	65
U100.09	1000	170	175	130	100	-	-	135	65
U100.10	1000	175	180	130	100	-	-	140	65
U100.10R	1000	180	180	130	100	110	110	145	65
U100.11	1000	180	185	130	100	-	-	145	65
U100.12	1000	185	190	130	100	-	-	150	65
U100.13	1000	190	195	130	100	-	-	155	65
U100.14	1000	195	200	130	100	-	-	159	65
U100.15	1000	200	205	130	100	-	-	164	65
U100.15R	1000	205	205	130	100	110	110	169	65
U100.16	1000	205	210	130	100	-	-	169	65
U100.17	1000	210	215	130	100	-	-	174	65
U100.18	1000	215	220	130	100	-	-	178	52
U100.19	1000	220	225	130	100	-	-	183	52
U100.20	1000	225	230	130	100	-	-	188	52
U100.20R	1000	230	230	130	100	110	110	193	52
U100.25R	1000	255	255	130	100	110	110	240	52
U100.30R	1000	280	280	130	100	110	110	288	52

\*Vert. and horiz. outlets on order .

## SLOPE DESIGNS



# U100



## GRATINGS

Material	Design	Load	Code	L (mm)	Width (mm)	Thickness (mm)	Opening (mm)	Units (x LM)
DUCTILE IRON	SLOTTED	B125	FNX100UCBM	500	130	6	14,9	2
	SLOTTED	C250	FNX100UCCM	500	130	6	13	2
GALVANIZED STEEL	SLOTTED	A15	GN100UCA	1000	130	3	9	1
	SLOTTED	A15	GN100UOA (1)	1000	130	3	8	1
	PERFORATED	A15	GP100UCA	1000	130	3	Ø 6	1
	MESH	B125	GEX100UCB33	1000	130	2	30 x 30	1
	HEELPROOF MESH	B125	GEHX100UCB	1000	130	2	30 x 10	1
	SINGLE SLOT	C250	GR100UOC (1)	1000	130	70	15	1
	DOUBLE SLOT	C250	GDR100UOC (1)	1000	130	70	2 x 12	1
STAINLESS STEEL	SLOTTED	A15	IN100UCA	1000	130	3	7	1
	PERFORATED	A15	IP100UCA	1000	130	3	Ø 6	1
	MESH	B125	IX100UCB	1000	130	3	30 x 20	1

(1) Without screws.

## LOCKING SYSTEM

LOCKING BAR.

Two locking bars and two screws per linear metre.

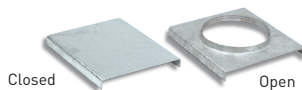


## SUMP UNITS AND ACCESSORIES TABLE

Code	L (mm)	H (mm)	Width (mm)	Ø Outlet (mm)		Sump Units	Bucket
				Lateral	Front		
AU100	500	542	130	110/160	90	1	CU100

\*Suitable up to height 20R.

## END CAPS



Channel	Code	Type	Ø (mm)
U100.00R	T100U00C	CLOSED	-
	T100U00A	OPEN	110
U100.05R	T100U05C	CLOSED	-
	T100U05A	OPEN	110
U100.10R	T100U10C	CLOSED	-
	T100U10A	OPEN	110
U100.15R	T100U15C	CLOSED	-
	T100U15A	OPEN	110
U100.20R	T100U20C	CLOSED	-
	T100U20A	OPEN	110
U100.25R	T100U25C	CLOSED	-
	T100U25A	OPEN	110
U100.30R	T100U30C	CLOSED	-
	T100U30A	OPEN	110

## STEP UNITS

Code  
CEU100



## GALVANIZED STEEL BUCKET

Code

CU100

