



GÁRGOLAS

GARGOYLES - GÁRGULAS

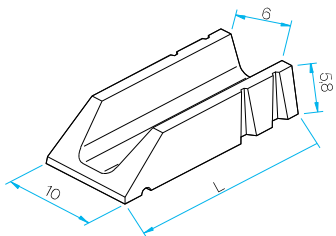


LAS GÁRGOLAS SON PIEZAS DE DESAGÜE DE TERRAZAS CUYO OBJETIVO ES EVACUAR EL AGUA DE LLUVIA DE LAS MISMAS.

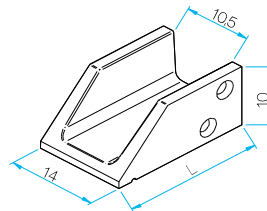
Drainage pieces protruded from which the water is projected from the vertical line of the facade wall. They are manufactured to a standard size w/o attached plate.

As gárgulas são peças de escoamento salientes pelas quais a água é projectada para fora da vertical da parede da fachada.

GAR-06



GAR-10



Código Code - Código	L cm
GAR-06	22
GAR-0635	35
GAR-10	22
GAR-1035	35

