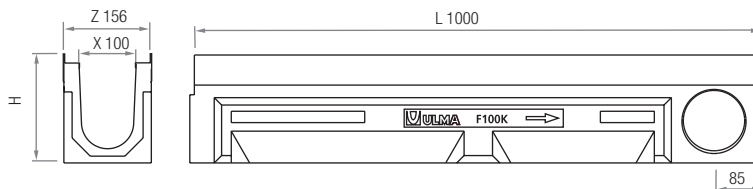
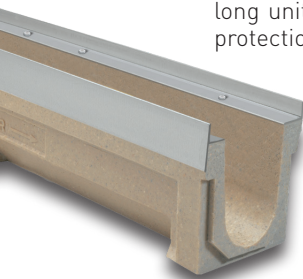


F100K

LOAD CLASS
UP TO F900
EN-1433 STANDARD

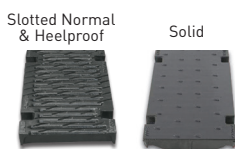
ULMA Linear Drainage Channel type F100K: External width 156 mm; Internal width 100 mm; Available with overall heights between 190 mm and 310 mm. Suitable for cascaded type slope to collect rainwater in 1 metre long units. Safe locking system consists of eight bolts per LM; Integrated galvanized steel* edges for lateral protection.

*Also available with cast iron edges.



Channel	L (mm)	H (mm)	Width (mm)		Ø Outlet*(mm)		Hydraul. Section (cm ²)	Pcs. / Pallet
			Z	X	Vert.	Hor.		
F100K00R	1000	190	156	100	110	110	126	52
F100K10R	1000	250	156	100	110	-	184	39
F100K20R	1000	310	156	100	110	110	242	39

*Vert. and horiz. outlets on order.

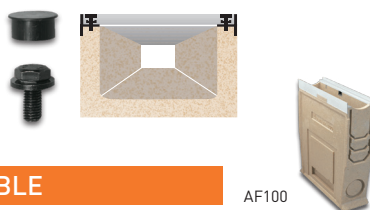


GRATINGS

Material	Design	Load	Code	L (mm)	Width (mm)	Opening (mm)	Units (x LM)
DUCTILE IRON	SLOTTED	D400	FN100FTDM	500	145	13,75	2
	HEELPROOF SLOTTED	D400	FNHX100FTDM	500	145	8	2
	SLOTTED	E600	FNX100FTEM	500	145	19	2
	SOLID	F900	FC100FTFM	500	145	-	2
	SLOTTED	F900	FNX100FTFM	500	145	19	2
	HEELPROOF SLOTTED	F900	FNHX100FTFM	500	145	8	2

LOCKING SYSTEM

8 BOLT LOCKING SYSTEM.
8 screws with protection cap, per linear metre.



SUMP UNITS AND ACCESSORIES TABLE

Code	L (mm)	H (mm)	Width (mm)	Ø Outlet (mm)		Sump Units	Bucket
				Lateral	Front		
AF100	500	580	156	110/160	110	1	CU100

END CAPS		Closed		Open	
Channel	Code	Type	Ø (mm)		
F100K00R	T100F00C	CLOSED	-		
	T100F00A	OPEN	110		
F100K10R	T100F10C	CLOSED	-		
	T100F10A	OPEN	110		
F100K20R	T100F20C	CLOSED	-		
	T100F20A	OPEN	110		

STEP UNITS
Code
CEF100
GALVANIZED STEEL BUCKET
Code
CU100



SLOPE DESIGNS

